

# Hinkle Creek Watershed

## Public Meeting Notice

### Public Meeting Information

When: **June 27<sup>th</sup> at 6 pm**

Where: Deming Masonic Lodge  
22520 Gifford Ave  
Deming, Indiana

### Meeting Agenda

- Watershed Basics
- Description of the Hinkle Creek Watershed
- Project Purpose
- Project Scope
  - Flooding Issues
  - Erosion Issues
  - Floodplain Mapping
  - Potential Future Problems
- Preliminary Findings

### Questions?? Contact:

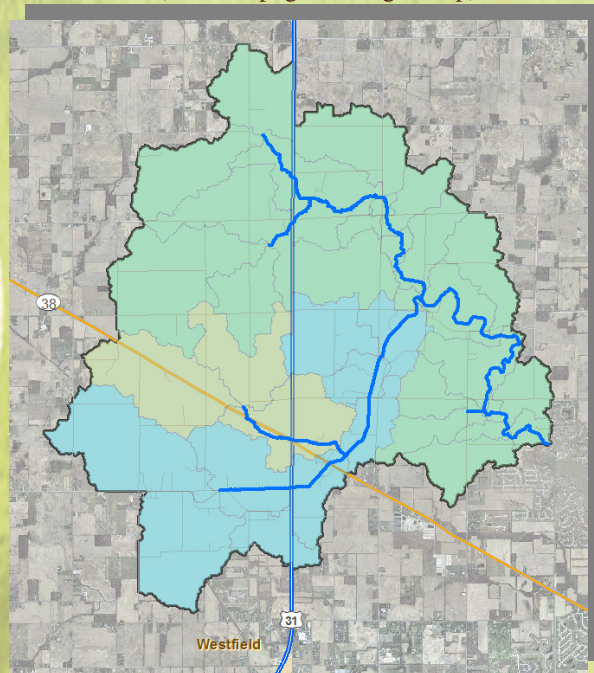
Sam Robertson, P.E.  
Clark Dietz, Inc.  
[samuel.robertson@clarkdietz.com](mailto:samuel.robertson@clarkdietz.com)  
(317) 808-3142

or

Greg Hoyes  
Hamilton County Surveyor's Office  
[greg.hoyes@hamiltoncounty.in.gov](mailto:greg.hoyes@hamiltoncounty.in.gov)  
(317) 776-8495

### Hinkle Creek Watershed Map

(see next page for larger map)



### Hinkle Creek Watershed Facts

- 20.9 Square Miles
- 80% Agricultural Land
- 14% Residential Land
- 4.5% Commercial/Industrial Land
- 1.5% Wooded or Pasture Land






# Hinkle Creek Watershed



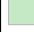


Public Meeting Location

**Legend**

-  Flowpaths
-  Stream Line
-  Hinkle\_Boundary

**HinkleWatershed**

**Drains**

-  Hinkle Creek
-  Issac Jones Drain
-  Lindley Drain

**Hinkle Creek Watershed**  
 ~13500 Acres  
 20.9 Sq. Mi.  
 HUC14: 05120201080100

